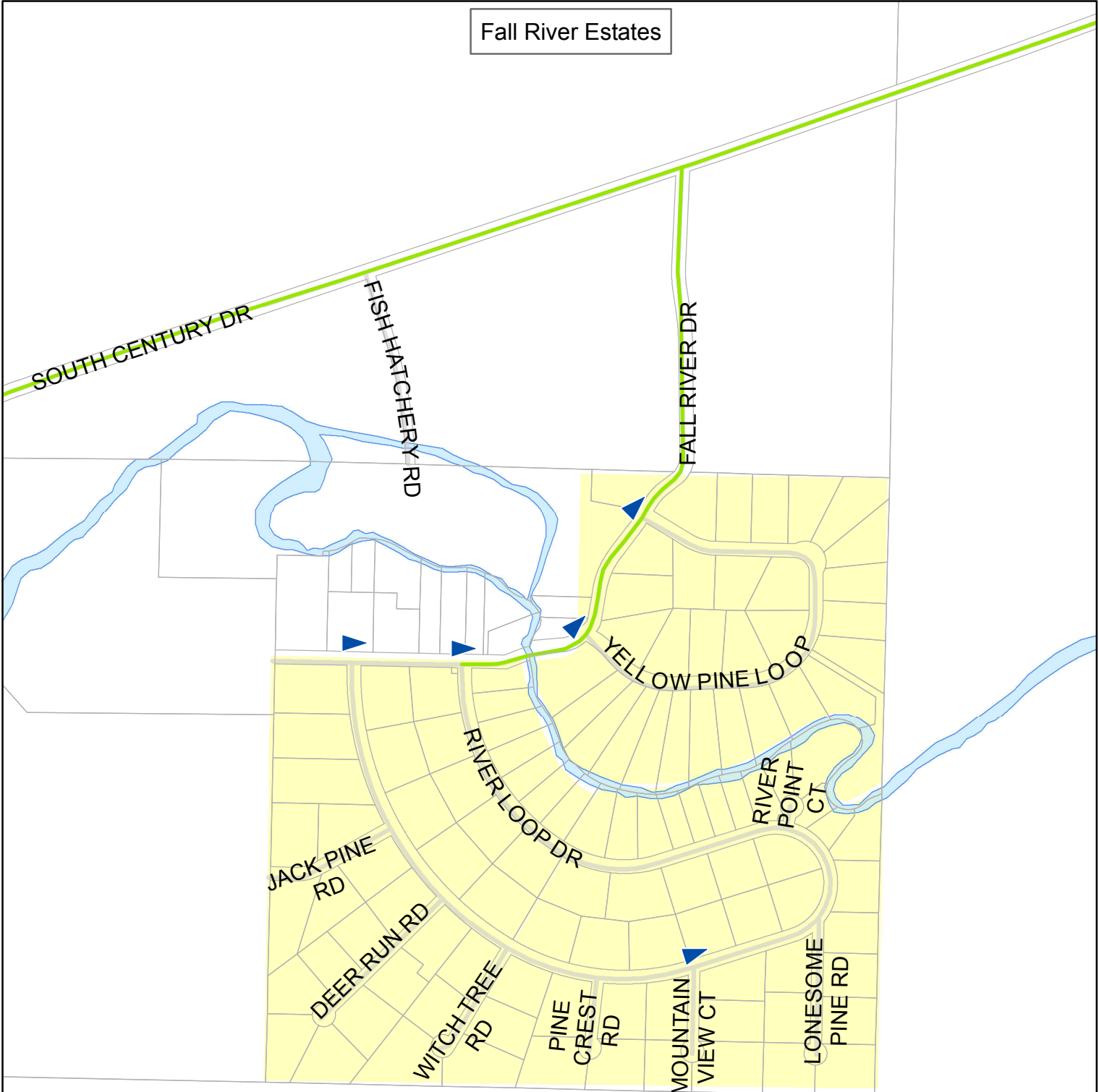






Fall River Estates



Key


-  UNCLASS
-  INSTALLED
-  PROPOSED
-  OTHER

0 600 1,200 1,800 Feet

1:7,200

Date: 7/22/2011

Deschutes County Road Department

Map Created By: 

John Anderson, GIS Specialist
 Phone: (541) 322-7102
 Email: johna@co.deschutes.or.us
 Address: 61150 SE 27th St
 Bend, OR 97702

The information on this map was derived from digital databases on Deschutes County's G.I.S. Care was taken in the creation of this map. Deschutes County cannot accept any responsibility for errors, omissions, or positional accuracy and, therefore, there are no warranties which accompany this product. However, notification of any errors will be appreciated.

P:\ArcGIS_Projects\BOCC\Evacuation\Fall River